

# What Will Your Legacy Be?

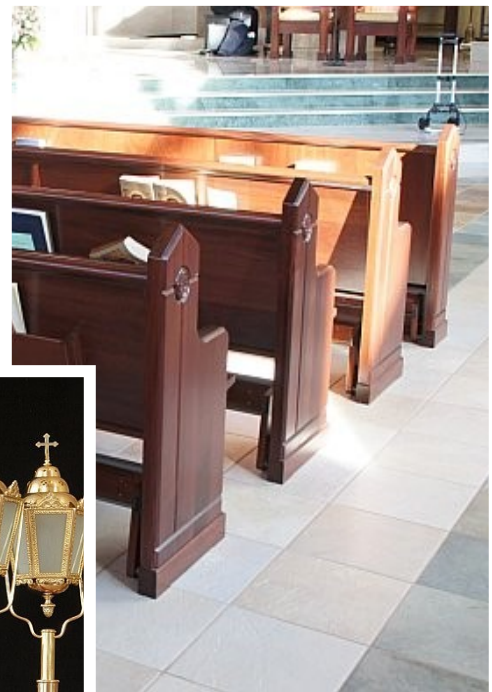
## MEMORIAL OPPORTUNITIES



### OUR LADY OF GUADALUPE PARISH...

... invites you to create a permanent legacy for your family and for Catholics and residents of Buckingham for generations to come.

As you and your loved ones worship here, receive Sacraments here and become part of our Catholic family... *what will your legacy be?*

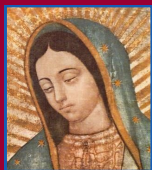


REVISED  
SEPTEMBER  
2019









# *A Memorial Legacy Is...*

... a special opportunity for parishioners and friends of Our Lady of Guadalupe parish to memorialize or commemorate specific items within our new church in observation of your special intentions. These items can be artistic, structural, liturgical, devotional, or functional.

In recognition of your thoughtfulness and generosity, your name – or that of the people to whom you choose to pay tribute through your Memorial Legacy gift – will be honored through engraving or on a plaque located on or near the item, itself, or in the Narthex of our church.

Memorial Legacies are reserved on a first come, first served basis. Many of your fellow parishioners have already reserved items, such as the Shrine painting of Our Lady of Guadalupe, the Stations of the Cross, the Altar, the Crucifix, the Tabernacle, Sanctuary lamps, various liturgical accessories and Sanctuary furnishings, such as lecterns and pews.

If you wish to reserve a Memorial Legacy, kindly select an item from the following pages. Then, fill out the pledge form on the last page and return it in to the parish office or place it in the Offertory at Mass.

Please note that a memorial is a tax-deductible donation made in addition to any pledge you have already made to the capital campaign.

If you are interested in an item but would like to consider joining with another individual or family to share the cost, please call our parish office at **267-247-5374**.

There is much more sacred art planned for our church, chapel and shrine. Appointing our church fully is a process that will take many years, by virtue of the intricate nature of the artistic process on such a large scale and, of course, the cost.

The artistic pieces you will see on the left-hand pages of this brochure are considered “A-level” art, in that they take top priority for installation. As these items become sponsored, the next level of items will move into the priority slot. You will have an opportunity to sponsor those artistic pieces when we get to that stage, and a new *Memorial Legacy* brochure will be issued at that point.

It is important to note that we continue to explore possibilities with regard to using artwork from closing parishes. The church was not designed with that intention and the challenges are many. However, as those opportunities present themselves, they will be considered.

If you have any questions or would like to discuss a Memorial Legacy of a sacred arts piece that you read about in our blue *Dedication Celebration* book that is not yet listed in this Memorial Legacy brochure, please contact our church office.

Our Lady of Guadalupe parish family thanks you for prayerfully considering a Memorial Legacy that will be recognized and appreciated by Catholics families and residents of Buckingham for generations to come.

## STAINED GLASS WINDOWS



### SANCTUARY WINDOW & CHEVRON BEHIND THE RETABLO

The chevron features a cruciform and octagon motif in amber and gold with a cobalt border. The sanctuary window echoes that design, but is enhanced with a border of lilies and stylized roses.

**SANCTUARY WINDOW: \$50,000**  
**CHEVRON WINDOW: \$50,000**

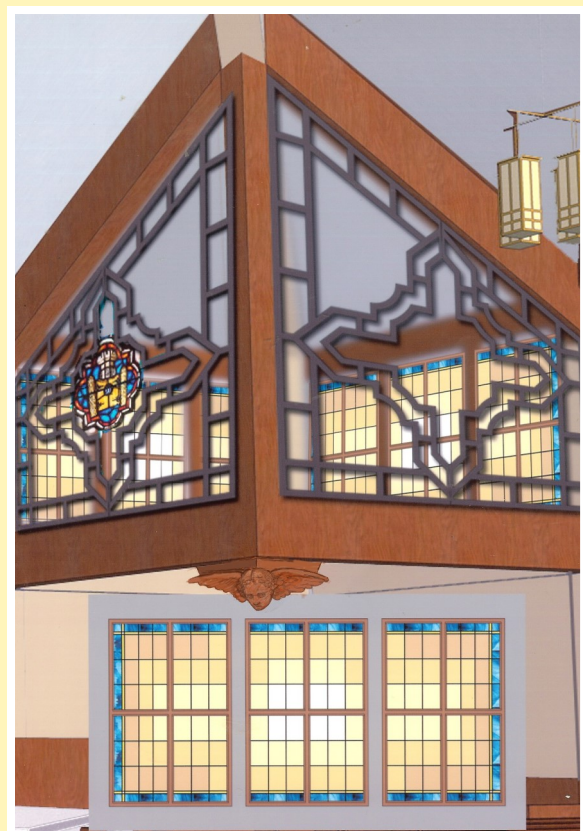
“The sacred arts, by their nature, are directed toward expressing in some way the infinite beauty of God in works made by human hands. Their dedication to the increase of God's praise and of His glory is more complete, the more exclusively they are devoted to turning men's minds devoutly toward God.”

—*Catechism of the Catholic Church, Second Edition*

### CLEARSTORY WINDOW CORNERS

Each clearstory window corner consists of two stained glass windows featuring three panels of amber colored stained glass with a cobalt blue border and a large cruciform motif. These windows are designed to filter a soft, alabaster light through the wrought iron and stained glass medallion buttress insets. The medallion insets are still in the planning stage and will be available for sponsorship in the future.

**ONE CORNER/2 WINDOWS**  
(4 corners available): **\$20,000/EA**







### AMBO

The Botticino marble podium or lectern from which the readings and Gospels are proclaimed during Mass. **CLAIMED**

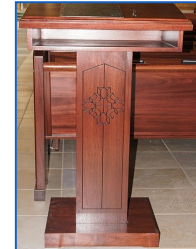
**SPONSORSHIP AMOUNT: \$ 25,000**



### PRAYER BOOK LECTERN

Red mahogany, portable book pedestals designed to hold the prayer intentions books and other liturgical materials. ONE available.

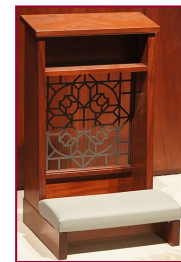
**SPONSORSHIP AMOUNT: \$5,000/EA**



### PRIE DIEU

Red mahogany, portable kneelers with armrest, book shelf and cast iron inset. Used for special liturgical occasions. TWELVE available.

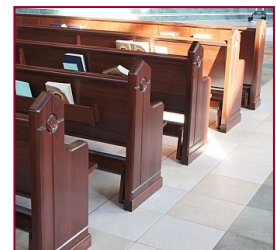
**SPONSORSHIP AMOUNT: \$1,000/EA**



### MAIN & SIDE AISLE PEWS

Red mahogany benches featuring high-quality kneelers and a rose and Cross motif symbolizing Mary and Jesus. FIFTY-TWO available.

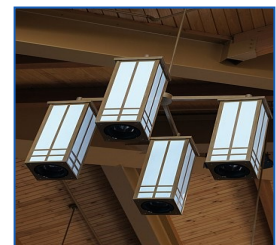
**SPONSORSHIP AMOUNT: \$5,000/EA**



### CHURCH CHANDELIERS

These mission-style pendant light fixtures with dual intensity capability and dimmer controls lend flexible lighting to the Nave of the church.

**SPONSORSHIP AMOUNT: \$1,000/EA**



### BAPTISMAL FONT

Marble with inlaid mosaic tile decorates the Baptismal Font used to baptize our newest parishioners on any given Sunday.

Sponsorship Amount: \$75,000 **CLAIMED**



## STAINED GLASS WINDOWS



### ROSE WINDOW

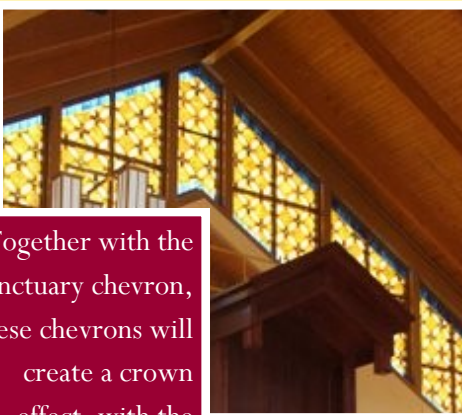
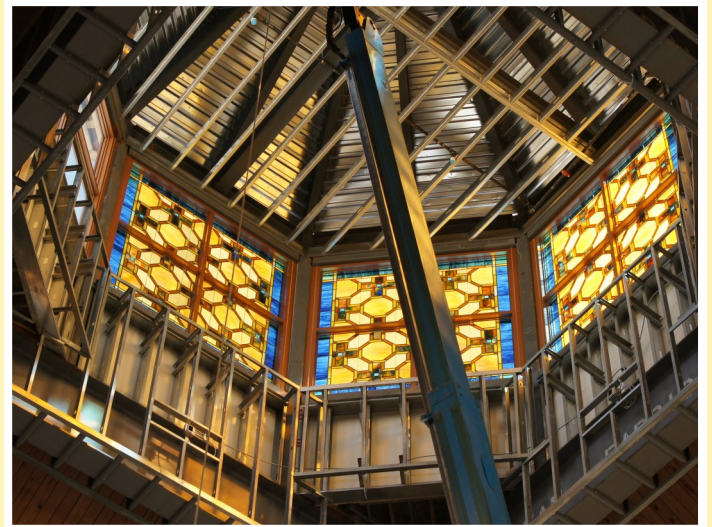
The stained glass, circular window overhead in the Narthex was designed by our Pastor, Monsignor Joseph Gentili. Inspired by the detail of the Miraculous Medal, it features the Immaculate Hearts of Jesus & Mary, the letter “M” for Mary, the Cross and twelve stars representing the Apostles. CLAIMED

**SPONSORSHIP AMOUNT: \$25,000**

### CUPOLA WINDOWS

Eight panels of amber and gold colored stained glass with cobalt borders depicting a cruciform and octagonal motif. CLAIMED.

**SPONSORSHIP AMOUNT: \$25,000**



Together with the Sanctuary chevron, these chevrons will create a crown effect, with the cupola at its peak.

*This image does not reflect the design of the three chevrons, which is in progress. Potential sponsors may inquire about the details of each by calling the church office.*

### THREE CHEVRONS

Completing the chevron surround led by the Sanctuary chevron (see pg. 4) will be three more chevrons on the other three walls of the church, near the ceiling. Each are in the design phase and will be customized to reflect the various aspects of the Our Lady of Guadalupe Shrine, the Nave/Narthex and the Baptistry/Chapel above which these chevrons create a crown effect. THREE available.

**SPONSORSHIP AMOUNT: \$70,000/EA**

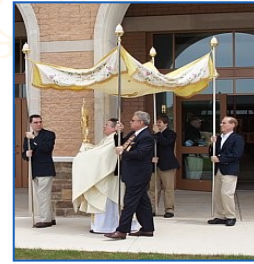




### PROCESSIONAL CANOPY

Ornamental, embroidered silk canopy held above the Blessed Sacrament during processions outside the church.

**SPONSORSHIP AMOUNT: \$2,000**



### SMALL GOLD CRUETS AND OVAL TRAY

Small, gold-plated vessels used for containing the wine and water required for the Holy Sacrifice of the Mass, set upon a gold-plated tray.

**CLAIMED**

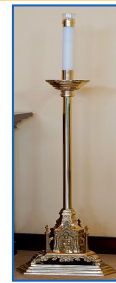
**SPONSORSHIP AMOUNT: \$2,000**



### PROCESSIONAL CANDLES

Gold-plated, large candle sticks designed for use in the processional of the Mass. TWO available.

**SPONSORSHIP AMOUNT: \$1,000/EA**



### HOLY WATER FONTS (6)

Botticino marble vessels containing blessed water. **CLAIMED.**

**SPONSORSHIP AMOUNT: \$15,000/EA**



### HOLY WATER URN & NICHE

Gold-plated receptacle on a marble base for water that has been blessed, ensconced in a wall alcove in the Narthex. **CLAIMED**

**SPONSORSHIP AMOUNT: \$ 5,000**



### HOLY OIL CANISTERS & COVERS

Gold plated holy oil vessels containing the Chrism, Oil of the Sick and Oil of the Catechumen used for the Sacraments. **CLAIMED.**

**SPONSORSHIP AMOUNT: \$6,000**



## CHURCH SHRINES



*Concept image only. Actual statue & vignettes in design phase.*

### BLESSED VIRGIN MARY SHRINE

Annunciation Statue on a Botticino marble base with four painted vignettes featuring defining moments in the life of our Blessed Mother, such as the Visitation, the Presentation, the Finding of Jesus in the Temple and the Wedding Feast at Cana.

**STATUE : \$30,000 CLAIMED**

**6 VIGNETTES AT \$5,000 EACH: \$30,000 CLAIMED**

### ST. JOSEPH SHRINE

Statue of Joseph's Dream on a Botticino marble base with four painted vignettes depicting the Flight into Egypt, the Scene in the Carpenter Shop, the Marriage of Joseph and Mary, and the peaceful Death of St. Joseph.

**STATUE: \$30,000**

**CLAIMED**

**6 VIGNETTES AT \$5,000 EACH: \$30,000**

**CLAIMED**



*Concept image only. Actual statue & vignettes in design phase.*

## OUTSIDE ACCESSORIES



**BENCHES  
\$2,500EA**

**CLAIMED**



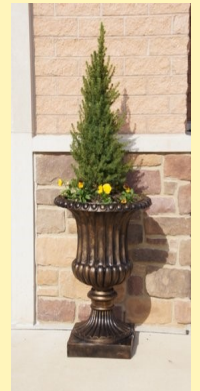
**BIKE RACK  
\$1,000**

**CLAIMED**

**PLANTERS/URNS (14)**

**(7) COURTYARD (6) FRONT OF CHURCH**

**\$1,000EA**





## GOthic TORCHES & STAND

Used for processions of the Blessed Eucharist and for special Masses.  
FIVE available.

**SPONSORSHIP AMOUNT: \$ 500/EA**



## OMBRELLINO

An ornamental silk, embroidered canopy on a long handle that is used in processions.

**SPONSORSHIP AMOUNT: \$1,000**



## POOR BOXES(4)

Wooden boxes collect for the outreach and support of the community's needy. **2 CLAIMED - 2 AVAILABLE**

**SPONSORSHIP AMOUNT: \$ 1000/EA**



## PAIR OF MEDIUM CRUETS

Gold-plated, medium vessels for containing the water and wine used in the Sacrifice of the Mass. **CLAIMED**

**SPONSORSHIP AMOUNT: \$3,000**



## EXTRA LARGE BASIN

This gold-plated bowl is used to contain the water in the washing of the feet ceremony at the Holy Thursday Triduum Prayer Service.

**SPONSORSHIP AMOUNT: \$1,000**



## STACKING CIBORIA

Two sets of hammered, gold-plated metal vessels for containing the Blessed Sacrament. One set of two. **CLAIMED**

One set of two still AVAILABLE

**SPONSORSHIP AMOUNT: \$3,000**



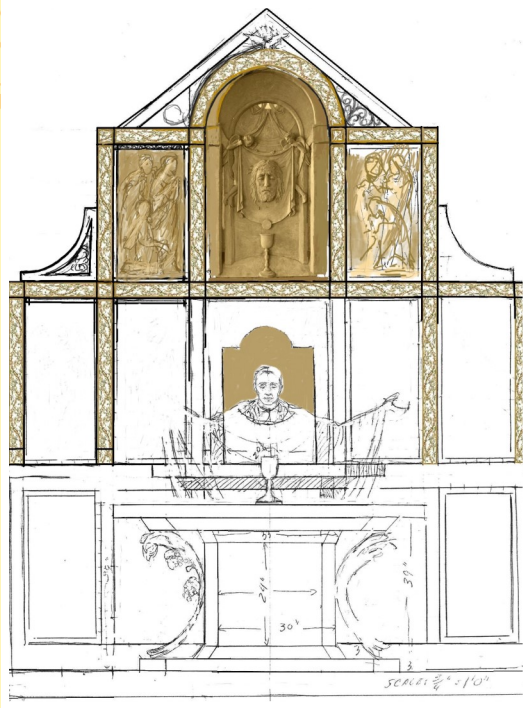
## BOOK OF GOSPELS COVER

Hammered gold plate & silver book cover depicting the three-dimensional image of Our Lady. **CLAIMED**

**SPONSORSHIP AMOUNT: \$5,000**



## THE CHAPEL OF ST. JUAN DIEGO



*Concept image only. In design phase.*

### RETABLO

The area behind the altar featuring relief tiles in a full color motif depicting Angels of the Passion and Saints of the Eucharist against a stunning backdrop of marble and a red mahogany Reredos.

**RETABLO: \$60,000**

### SHRINE STATUE OF SAINT JUAN DIEGO

Bronze statue of St. Juan Diego as he is seeing the image of Our Lady in the tilma for the first time.

**SPONSORSHIP AMOUNT: \$50,000**



*Concept image only. In design phase.*



### SHRINE STATUE OF SAINT MICHAEL THE ARCHANGEL

Bronze statue of St. Michael the Archangel.

**SPONSORSHIP AMOUNT: \$50,000**

*Concept image only. In design phase.*



## LITURGICAL ACCESSORIES

### BISHOP'S LABAVO SET

Gold-plated cruet and bowl intended for use in the ceremonial washing of the hands during Mass.

**SPONSORSHIP AMOUNT: \$ 2,000**



### SEVEN-POINT CANDELABRA

Romanesque, gold-plated seven-point candelabra that is lit on the altar during Mass. **TWO** available.

**SPONSORSHIP AMOUNT: \$750/EA**



### THREE-POINT CANDELABRA

Romanesque, gold-plated three-point candelabra that is lit on the altar during Mass. **TWO** available.

**SPONSORSHIP AMOUNT: \$500/EA**



### STANDING COMMUNION CUPS

Gold-plated, vessels for distributing the Blood of Christ in the form of wine at the Mass. **TWO** available.

**SPONSORSHIP AMOUNT: \$1,000/EA**



### STANDING CIBORIA

Hammered, gold-plated metal vessels for distributing the Blessed Sacrament in the form of the host at Mass. **SEVEN** available.

**SPONSORSHIP AMOUNT: \$1,000**



### RING TRAY

Engraved, gold-plated tray used in the Sacrament of Marriage at wedding ceremonies. **CLAIMED**

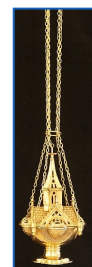
**SPONSORSHIP AMOUNT: \$250**



### CENSER & STAND

This gold-plated censer, or thurible, is suspended by chains, and used for burning incense at solemn Masses. **CLAIMED**

**SPONSORSHIP AMOUNT: \$3,000**





## LITURGICAL ACCESSORIES / CHAPEL



### SMALL CANDLESTICKS(4)

Gold-plated, Romanesque style candlesticks. CLAIMED

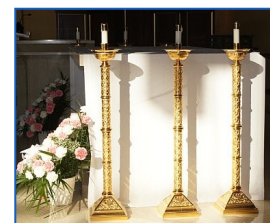
SPONSORSHIP AMOUNT: \$ 250/EA



### LARGE FLOOR CANDLESTICKS

Gold-plated, Romanesque style floor candlesticks. SIX available.

SPONSORSHIP AMOUNT: \$1,000



### CHAPEL SEATS/CHOIR LOFT CHAIRS

Red mahogany solid wood chairs with upscale cushions. NINETY available.

SPONSORSHIP AMOUNT: \$250/EA



### CHAPEL TABERNACLE

Gold-plated fixture that houses the consecrated hosts.

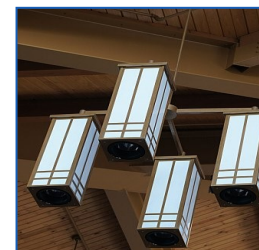
SPONSORSHIP AMOUNT: \$100,000



### CHAPEL CHANDELIERS

These mission-style pendant light fixtures lend soft lighting to the Nave of the church. EIGHT available.

SPONSORSHIP AMOUNT: \$1,000



### PASCHAL CANDLE & STAND

Gold-plated, floor candle that is lit every Easter season on Holy Saturday and remains on the altar until Ascension Day. CLAIMED

SPONSORSHIP AMOUNT: \$6,500







## SHRINE / CHOIR LOFT / MUSIC

### HANGING SHRINE LAMPS

These three pendant lamps are gold-plated and suspended by chains above the Our Lady of Guadalupe Shrine. **ALL THREE CLAIMED**

**SPONSORSHIP AMOUNT: \$ 2,000/EA**



### CHAPEL PIANO CLAIMED

This electric piano affords all the necessary functions for piano music in the chapel.

**SPONSORSHIP AMOUNT: \$ 5,000**



### AUDIO / SOUND SYSTEM

State-of-the-art sound system.

**SPONSORSHIP AMOUNT: \$100,000**



### ORGAN

This Allen organ Quantum Q-370 is a three-manual, 58-stop organ with seven distinct suites. It is powered by 20 tone cabinets and 51 speakers.

**SPONSORSHIP AMOUNT: \$50,000**

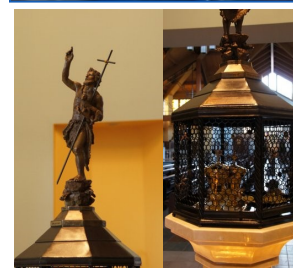


### ST. JOHN THE BAPTIST

Bronze sculpture on top of Baptismal Font. \$10,000. **CLAIMED**

### AMBRY

Bronze & wrought iron receptacle that holds holy oil canisters on top of Baptismal Font. \$15,000. **CLAIMED**

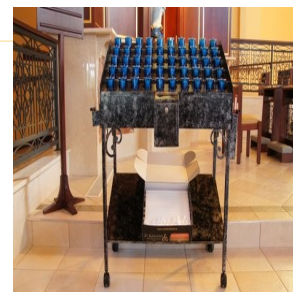


### VOTIVE STANDS

Three stands holding votive candles to devote to your intentions or that of a departed loved one. Three amber/Three blue.

All six **CLAIMED**

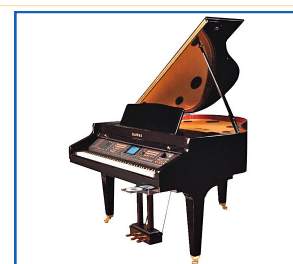
**SPONSORSHIP AMOUNT: \$18,000 FOR ALL 6**



### CHOIR LOFT PIANO

The Kawai CP-209 features 1000+ voices of every instrument category, touch screen LCD panel, recording capability and audio CD burner. **CLAIMED**

**SPONSORSHIP AMOUNT: \$40,000**



## FLAGS

A personalized memorial label will be embroidered on a tag and sewn onto each flag.

### BUCKINGHAM TOWNSHIP FLAG

Upon learning that Buckingham Township did not have a flag of its own, Our Pastor, Monsignor Joseph Gentili, obtained permission to commission this beautiful green flag, which has since been adopted by the Board of Supervisors as the official flag of Buckingham Township.

**SPONSORSHIP AMOUNT: \$500**



### BUCKS COUNTY FLAG

The official flag of Bucks County, PA, home to thirty-nine Catholic parishes.

**SPONSORSHIP AMOUNT: \$500**



### STATE OF PENNSYLVANIA FLAG

The official flag for the State of Pennsylvania

**SPONSORSHIP AMOUNT: \$500**



### PAPAL FLAG

Having received the Papal Blessing at our Dedication, we fly the Papal Flag in our consecrated church. **CLAIMED**

**SPONSORSHIP AMOUNT: \$750**



### OUR LADY OF GUADALUPE FLAG

This ornate, scalloped banner-style flag depicts Our Lady of Guadalupe, to whom our church is dedicated. **CLAIMED**

**SPONSORSHIP AMOUNT: \$1,000**



### SPECIAL NEEDS ACCOMMODATIONS

An Assisted Listening Device System amplifies Masses through headsets for the hearing impaired. An elevator servicing the choir loft is designed for the handicapped and those who

**ASSISTED LISTENING SYSTEM: \$10,000**

**CHOIR LOFT ELEVATOR: \$100,000**



**Elevator**





**Name(s):**

---

---

---

---

Phone: \_\_\_\_\_

*Item(s) To Memorialize:*

---

☐ In memory of \_\_\_\_\_

☐ In honor of \_\_\_\_\_

☐ On the occasion of \_\_\_\_\_

□ Sponsored by \_\_\_\_\_

☐ \$\_\_\_\_\_ is enclosed

Our Lady of Guadalupe Parish Office, 5175 Cold Spring Creamery Rd., Suites 3 & 5, Doylestown, PA 18902

267-247-5374 [olguadalupe.org](http://olguadalupe.org)